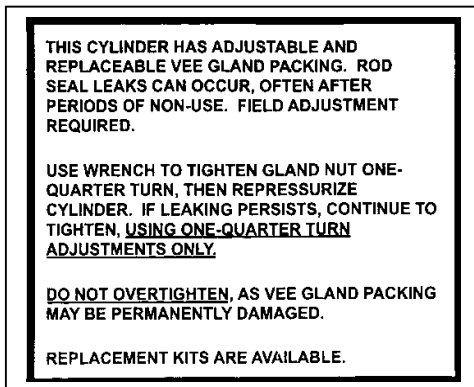
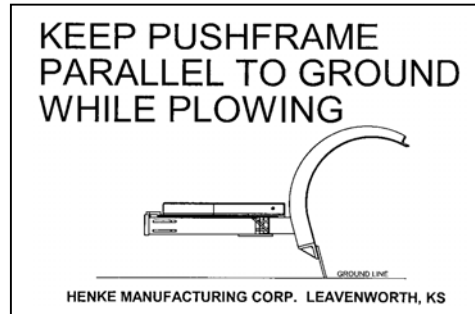




# SAFETY

**ONE OR MORE OF THESE SAFETY STICKERS MAY APPEAR ON YOUR HENKE PLOW. THEY ARE PLACED THERE TO INFORM YOU OF SAFETY ISSUES CONCERNING YOUR TYPE OF PLOW.**

**ALWAYS READ AND FOLLOW SAFETY WARNINGS. THEY ARE IMPORTANT FOR YOUR SAFETY AND THE PROPER OPERATION OF YOUR HENKE PLOW.**



- 1. PERSONS WHO INSTALL, MOUNT, OPERATE OR SERVICE THIS EQUIPMENT MUST BE PROPERLY INSTRUCTED AND WARNED. DO NOT LET ANYONE OPERATE EQUIPMENT WITHOUT PROPER INSTRUCTION.**
- 2. READ DECAL INSTRUCTIONS, CAUTIONS, AND WARNINGS. READ THE SAFETY MESSAGES IN THIS MANUAL AND REPLACE MISSING OR DAMAGED SAFETY DECALS.**
- 3. UNAUTHORIZED MODIFICATIONS TO THE SNOWPLOW AND RELATED COMPONENTS MAY IMPAIR THE FUNCTION AND/OR SAFETY.**

## **IN SEASON MAINTENANCE**

Snow removal equipment must be cared for and maintained regularly. Daily or pre-route inspection and maintenance are necessary. Failure to do so may affect efficiency and safety.

A visual inspection must be carried out after every 8 hours of operation. Look for damaged components, bends, cracked welds or hydraulic leaks. **REPAIR IMMEDIATELY!** It is recommended to re-torque all bolts after the first 8 hours of use and to regularly check for loosened or missing fasteners. Replace any damaged or missing fasteners immediately.

Because of the environment in which snow equipment is expected to operate, hydraulic lines, fasteners, wearable or replaceable items and warning decals may become damaged by snow, ice and road debris. These items must be inspected daily and replaced if necessary to avoid equipment damage or personal injury.

Lubrication of moving parts is of the utmost importance. Exposure to snow, ice, salt and road debris will wash away lubrication quickly and it may be necessary to inspect and reapply lubrication more than once a day.

<b>ITEM No.</b>	<b>QTY.</b>	<b>PART No.</b>	<b>DESCRIPTION</b>
1	1	2300-A0178	Hitch Assembly
2	1	2300-A0179	Moldboard Weldment - Right
3	2	7080832	Hydraulic Cylinder, 4 x 20.75 x 2
4	1	2300-A0180	Moldboard Weldment - Left
5	1	2300-0487	Center Pin
6	2	7080341	Hydraulic Accumulator
7	Varies	Varies	Cutting Edge
8	1	2700-0234	Wrench Holder
9	2	7080322	Hydraulic Cross-Over Relief Valve
10	2	2800-A0176	Pin Assembly
11	2	2800-A0175	Pin Assembly
12	4	7050041	Cotter Pin, 1/4 x 2.00
13	1	7020087	Hex Capscrew, 3/4-10 x 6 G5P
14	1	7030030	Nut, 3/4-10 Toplock GCZ
15	4	7020020	Hex Capscrew, 5/16-18 x 1 G8YZ
16	8	7030086	Nut, 5/16-18 Nylock G2Z
17	4	7020023	Hex Capscrew, 5/16-18 x 2.50 G5Z
18	1	2700-0235	Wrench
19	Varies	7150003	Plow Bolt, 5/8-11 x 2.50
20	Varies	7030026	Nut, 5/8-11 Heavy Hex
21	8	7060111	Grease Fitting, Straight, 1/4-28
22	2	2300-A0220	Optional Mushroom Shoe Assembly

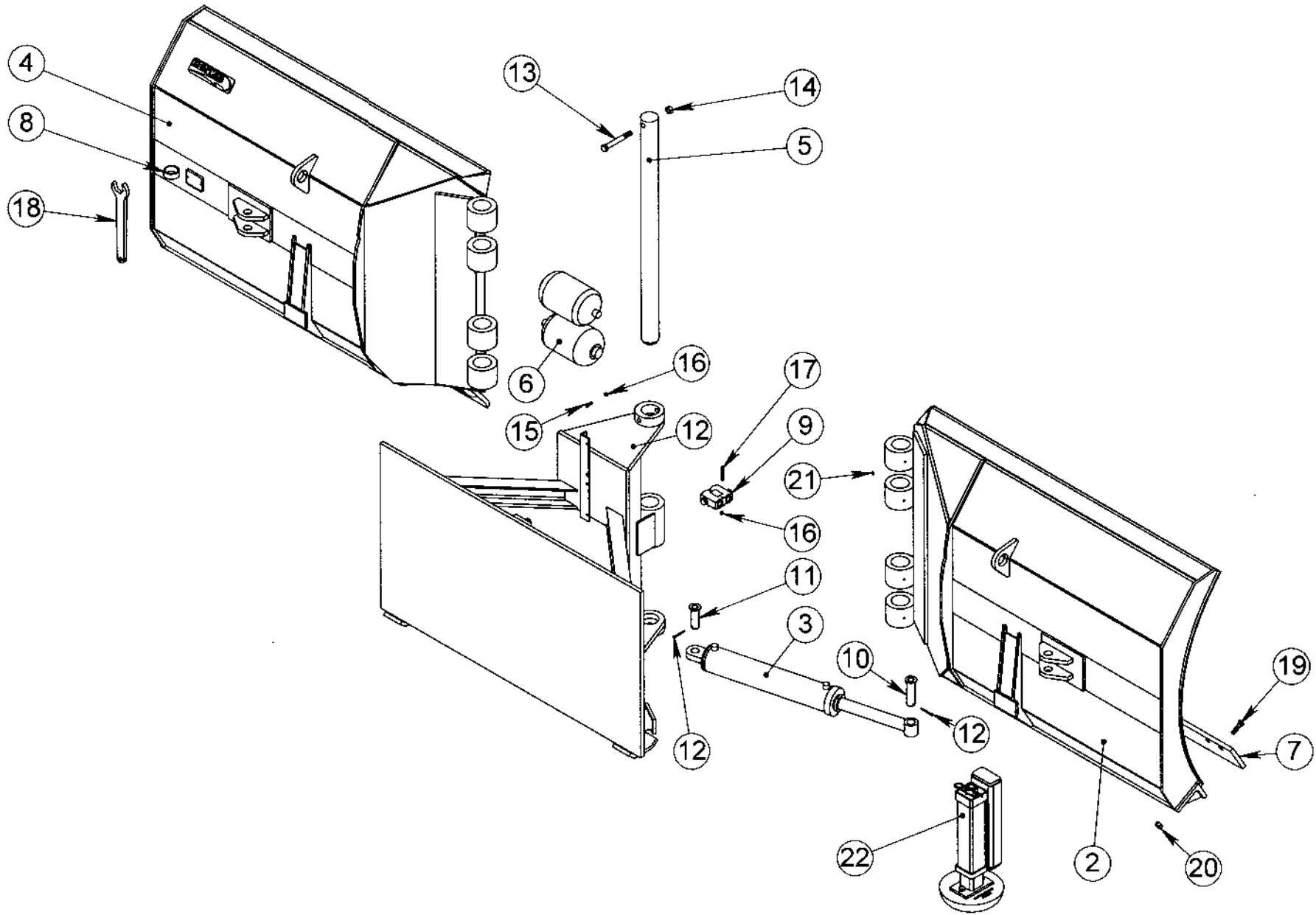


Figure 1 - Folding Vee Plow, Main Exploded View

## Folding Vee Cutting Edges

The inner edges of the Folding Vee cutting edges must be custom-trimmed to prevent interference between the left and right inner edges when the plow is in “scoop” mode. When multiple cutting edge sections are used on each side of the Folding Vee, the inner section must be trimmed, and the outer section untrimmed. Various trimmed and untrimmed cutting edges are listed below. Additional lengths and materials are available upon request.

**Table 2 – Common Folding Vee Cutting Edges**

Part No.	Description
2300-0483	Steel, 3/4 x 6 x 72, Trimmed, L/H (Note 1)
2300-0463	Steel, 3/4 x 6 x 72, Trimmed, R/H (Note 1)
2300-0493	Steel, 3/4 x 6 x 36, Trimmed, L/H
2300-0494	Steel, 3/4 x 6 x 36, Trimmed, R/H
7150073	Steel, 3/4 x 6 x 36, Untrimmed
2300-0495	Carbide, 3/4 x 6 x 36, Trimmed, L/H
2300-0496	Carbide, 3/4 x 6 x 36, Trimmed, R/H
7150035	Carbide, 3/4 x 6 x 36, Untrimmed
2300-0697	Dual Carbide, 7/8 x 5 x 36, Trimmed, L/H
2300-0696	Dual Carbide, 7/8 x 5 x 36, Trimmed, R/H
7150143	Dual Carbide, 7/8 x 5 x 36, Untrimmed
2300-0734	Steel, 3/4 x 6 x 48, Trimmed, L/H (Note 2)
2300-0733	Steel, 3/4 x 6 x 48, Trimmed, R/H (Note 2)
7150072	Steel, 3/4 x 6 x 48, Untrimmed (Note 2)
2300-0497	Carbide, 3/4 x 6 x 48, Trimmed, L/H
2300-0498	Carbide, 3/4 x 6 x 48, Trimmed, R/H
7150025	Carbide, 3/4 x 6 x 48, Untrimmed

Notes for Table 2:

- (1) Standard for FV12.
- (2) Standard for FV16.

**Table 3 - Standard Folding Vee Hydraulic Kit 7080366**

Note: Not Shown in Figure 1

Qty.	Henke Part No.	Description
2	7110483	Hose Assy., 1/2 2-wire x 20" total, -10 JIC F e/e
2	7110484	Hose Assy., 1/2 2-wire x 31.5" total, -8 JIC F x -10 JIC F
2	7110485	Hose Assy., 1/2 2-wire x 22.5" total, -8 JIC F e/e
6	7090117	Elbow, 90, -8 JIC M x -10 ORB Adj. M
4	7090009	Cap, -8 JIC
4	7090257	Elbow, 90, -8 JIC M x -8 ORB Adj. M
2	7090480	Tee, -10 JIC M, -10 ORB Adj. M Branch
2	7090132	Elbow, 90, -10 JIC M x -12 ORB Adj. M

Table 4 - Folding Vee Swivel Hitch Components

ITEM NO.	QTY.	PART NO.	DESCRIPTION
1	1	7020231	Hex Capscrew, 1-1/2 - 12 x 5.5 Gr. 5
2	2	7090111	Grease Fitting, Straight, 1/4-28
3	2	2300-0308	Plate
4	2	2300-0106	Fixed Shim
5	1	2300-0309	Tube
6	1	7030088	Nut, 1-1/2 - 12 Toplock Gr. C

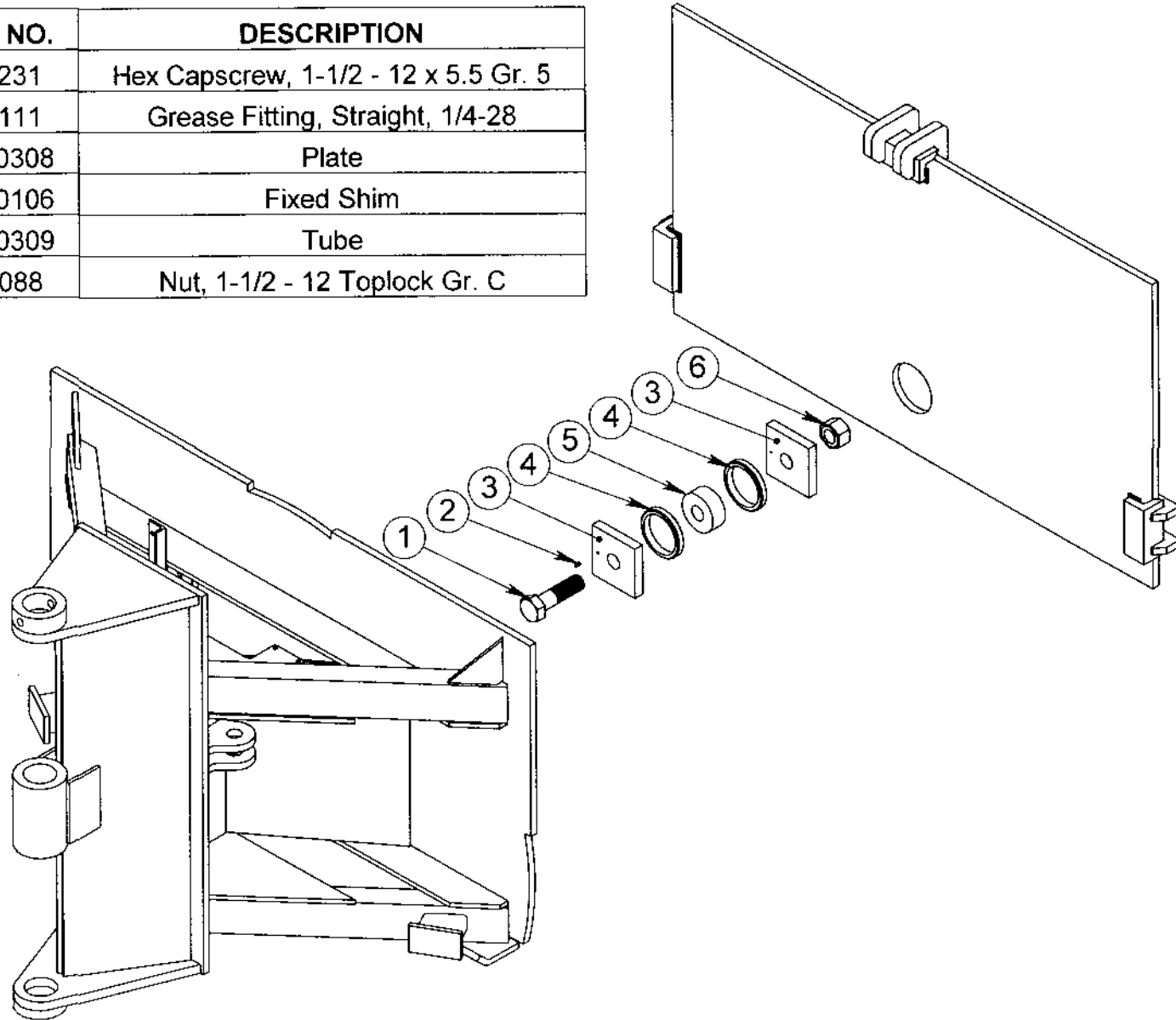
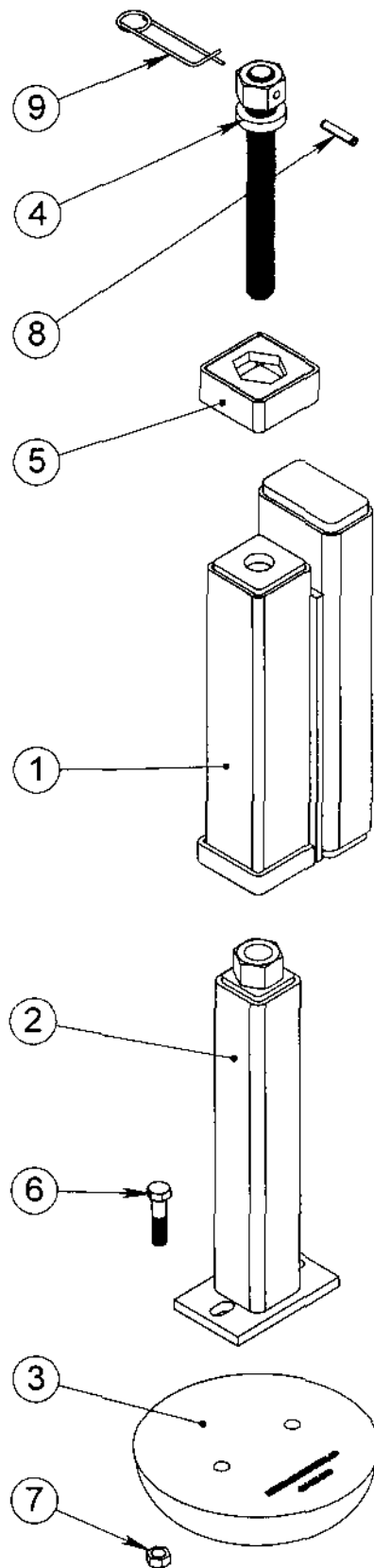


Figure 2 - Folding Vee Swivel Hitch Components

**Table 5 - Folding Vee Mushroom Shoe Assembly**

ITEM NO.	QTY.	PART NO.	DESCRIPTION
1	1	1900-A0238	Outer Tube Assembly
2	1	1900-A0044	Inner Tube Assembly
3	1	7140001	Mushroom Shoe
4	1	1900-A0041	Acme Screw Assembly
5	1	1900-A0040	Caster Screw Lock
6	2	7020288	Hex Capscrew, 5/8-11 x 2.5 Gr. 8
7	2	7030084	Nut, 5/8-11 Toplock Gr. C
8	1	7050028	Roll Pin, 3/8 x 2
9	1	7050090	Safety Pin



**Figure 3 - Folding Vee Mushroom Shoe Assembly**

## **Henke Standard Warranty Policy**

Henke Manufacturing Corporation(HMC) warrants its products against defects in material and workmanship for a period of 12 months from date of delivery.

HMC, at its option will repair or replace any parts or components found to be defective in materials or workmanship.

Defects will be determined through photos provided by dealer or user, or through physical inspection of returned parts. Parts are to be returned freight prepaid when requested to HMC, labeled with a returned goods authorization number.

Authorization for warranty repair will be faxed to the reporting dealer, and will include labor hours that HMC agrees to credit the dealer, and the Return Goods Authorization Number, if applicable. Credit amounts for agreed labor hours will not exceed 70% of dealer shop selling rate. Mileage, travel time, overtime, or any incidental costs will not be included in warranty consideration. Credits will apply to current or future business with HMC.

This warranty does not include normal wear items such as cutting edges, wear guards, scarifier teeth, etc. Repairs required as a result of misapplication, accidental damage, improper maintenance, improper installation, or negligence are also not covered by warranty.

HMC warranty for any purchased components, such as hydraulic cylinders will be superceded by, and equal to the component manufacturer warranty.

**SELLER IS NOT, UNDER ANY CIRCUMSTANCE, LIABLE FOR ANY INCIDENTAL, CONSEQUENTIAL OR PUNITIVE DAMAGES. SELLER EXPRESSLY DISCLAIMS AND EXCLUDES ALL IMPLIED WARRANTIES, INCLUDING ANY WARRANTY OR MERCHANTABILITY OR FITNESS FOR A PARTICULAR PURPOSE.**

# DEALER WARRANTY PROCEDURE

**For units delivered within the past 12 months, report any warranty problems needing repair to our Product support department. Have information ready regarding:**

1. Henke unit model and serial number,
2. Model of equipment Henke unit is attached to (prime mover)
3. Description of the problem and any helpful information by the end user. (Photos are always helpful).

Measurements or photos may be requested by Henke engineering for any issues regarding prime mover proximity and clearance, or any other unique considerations of fit and adaptability. These may be necessary for a proper repair recommendation and procedure.

Henke will respond with a written labor hour allowance for Henke participation on a faxed claim form and will ship any required replacement parts. If necessary, a repair procedure will be included on the claim form. A parts invoice will be generated to confirm shipment of the replacement parts.

If defective parts are needed for analysis, Henke will request their return. Any such returned items are to be labeled with the **claim number** and returned to:

**Henke Manufacturing Corp**  
**ATTN:Product support**  
**3070 Wilson Av**  
**Leavenworth, Ks. 66048**  
**RGA#\_\_\_\_\_**

The dealer should perform repairs as agreed on a dealer warranty repair order. Return the claim form with a copy of the dealer warranty repair order and service report. Credit as agreed will be issued to the dealer upon receipt of the dealer warranty repair order invoice (Pro-forma invoice), and upon receipt, inspection and warranty confirmation of the returned parts if any.

## **Parts & Service Assistance**

Parts and service assistance is available between the hours of **8:00 AM and 5:00 PM**, Central time, Monday through Friday. **Call 913-682-9000.**

Our web site, **[www.henkemfg.com](http://www.henkemfg.com)**, is a quick source for parts pricing and many common parts diagrams

Parts purchase orders may be faxed in at any time to **913-682-0300**. Faxed orders are encouraged, as they help insure order accuracy and follow up. Include any special instructions, such as drop ship addresses on your order.