

# HENKE TUCKBACK WINGS

**FOR MEDIUM AND HEAVY DUTY TRUCKS**



**VERSION 3.0 JUNE 2003**

**HENKE**

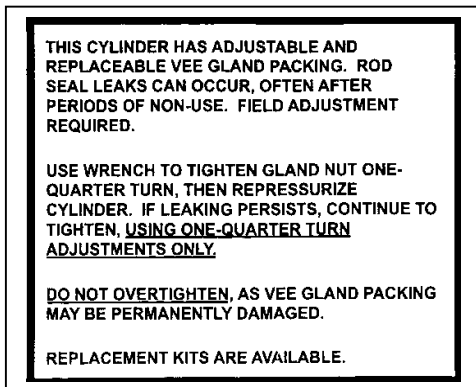
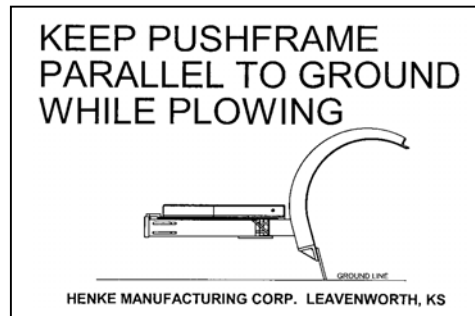
**HENKE MANUFACTURING CORPORATION**

MANUFACTURERS OF SNOW REMOVAL EQUIPMENT FOR 80 YEARS  
3070 WILSON AVE. LEAVENWORTH, KS 66048 PHONE(913)682-9000 FAX(913)682-0300  
WEBSITE ADDRESS : [WWW.HENKEMFG.COM](http://WWW.HENKEMFG.COM) EMAIL: [PARTS@HENKEMFG.COM](mailto:PARTS@HENKEMFG.COM)

# SAFETY

**ONE OR MORE OF THESE SAFETY STICKERS MAY APPEAR ON YOUR HENKE PLOW. THEY ARE PLACED THERE TO INFORM YOU OF SAFETY ISSUES CONCERNING YOUR TYPE OF PLOW.**

**ALWAYS READ AND FOLLOW SAFETY WARNINGS. THEY ARE IMPORTANT FOR YOUR SAFETY AND THE PROPER OPERATION OF YOUR HENKE PLOW.**



- 1. PERSONS WHO INSTALL, MOUNT, OPERATE OR SERVICE THIS EQUIPMENT MUST BE PROPERLY INSTRUCTED AND WARNED. DO NOT LET ANYONE OPERATE EQUIPMENT WITHOUT PROPER INSTRUCTION.**
- 2. READ DECAL INSTRUCTIONS, CAUTIONS, AND WARNINGS. READ THE SAFETY MESSAGES IN THIS MANUAL AND REPLACE MISSING OR DAMAGED SAFETY DECALS.**
- 3. UNAUTHORIZED MODIFICATIONS TO THE SNOWPLOW AND RELATED COMPONENTS MAY IMPAIR THE FUNCTION AND/OR SAFETY.**

# Installation Instructions For Henke Mid-Mount Tuck Back Wing

## Push Tube Assembly Mounting

**1.** Position the combined push tube and mounting assembly under the truck frame just behind the cab. Using an appropriate lifting device, raise the assembly and position the right hand frame mounting plate against the outside of the frame, 8 inches behind the cab and 14 inches from the ground as shown in the diagram. Minor adjustments may be made to avoid hangers, braces, etc. on the truck and to locate the mounting bolt- holes as close to the middle of the truck frame as possible.

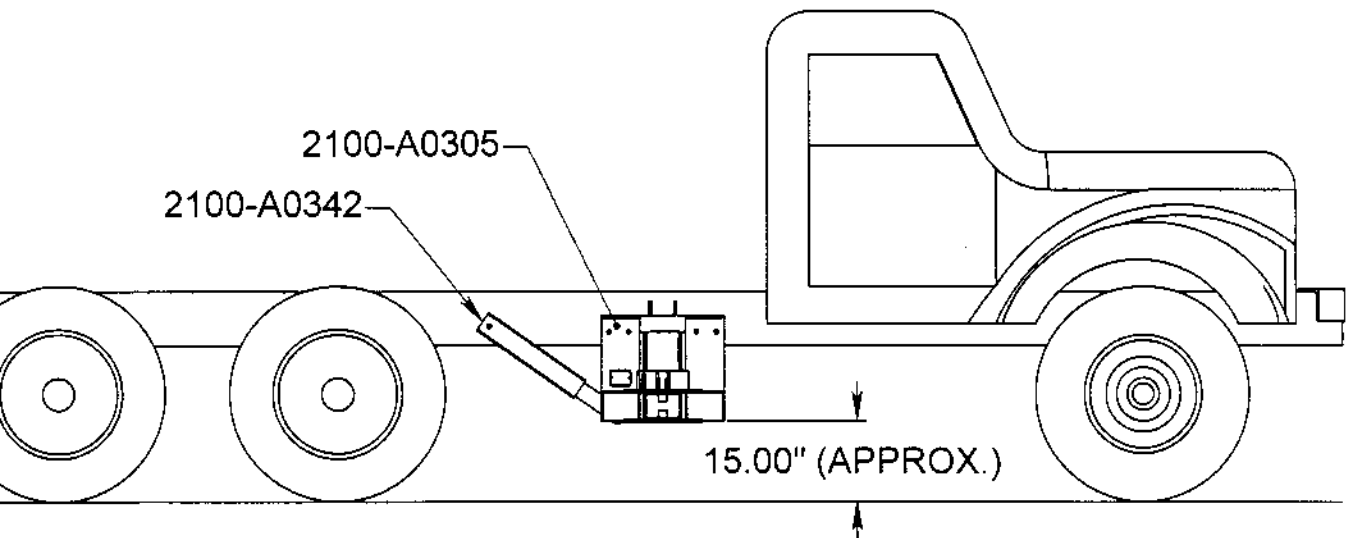
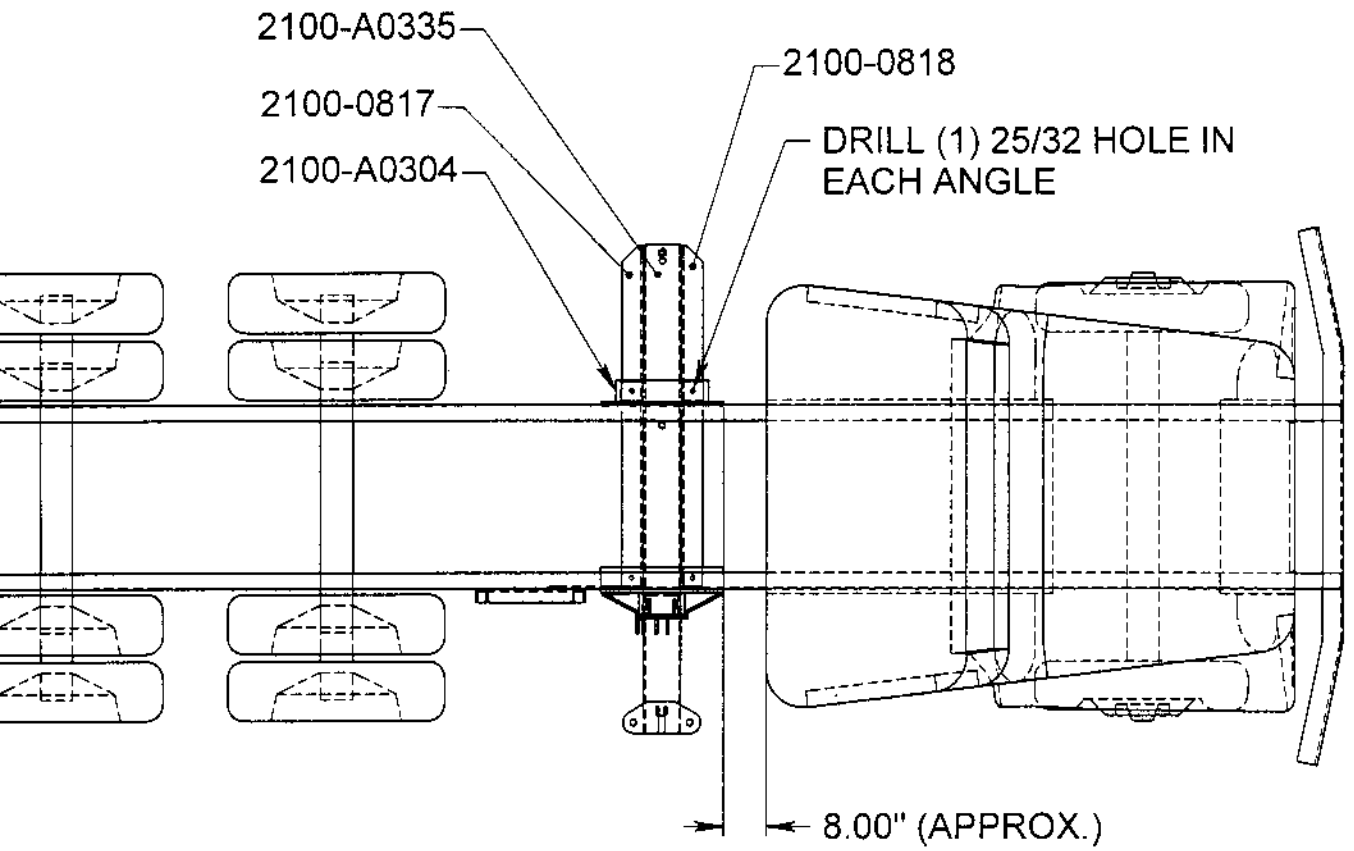
**Mark the position of the four mounting bolt holes on the truck frame. Drill the four holes in the frame using a 25/32 in. Drill bit. Secure Assembly with four 3/4 in. bolts.**

**2.** Position the left hand attaching plate on the left truck frame as was done with the right side attaching plate (See diagram). The two bolt holes in the attaching bar should be located at the center of the 4x4 in. attaching angles of the push tube assemblies. Mark and drill the four attaching bolt holes as was done on the right hand side of the truck frame. Mark and drill the mounting bolt holes in each of the two attaching angles (See diagram). Bolt the attaching angles to the attaching bar. **Temporarily secure the right side of the push tube assemblies with the lift chain on the lift arm.**

**3.** Attach right hand brace to the right frame attaching plate at the lower rear corner of the plate using a 3/4 in. bolt. Position the channel end of the brace onto the outside of the truck frame and mark the mounting bolt hole position on the truck frame. **Drill the frame and secure with a 3/4 in. bolt (See diagram).**

## Wing Moldboard Installation

The moldboard is installed by connecting the mold board attaching bracket with the lift side attaching bracket - **Connect the two with 1 ½ in. x 18 in. connecting pin.** Connect the mold board leading end to the inner push tube ears by installing the linkage assembly #2100-A0338 with pins provided.



## IN SEASON MAINTENANCE

Snow removal equipment must be cared for and maintained regularly. Daily or pre-route inspection and maintenance are necessary. Failure to do so may affect efficiency and safety.

A visual inspection must be carried out after every 8 hours of operation. Look for damaged components, bends, cracked welds or hydraulic leaks. REPAIR IMMEDIATELY! It is recommended to re-torque all bolts after the first 8 hours of use and to regularly check for loosened or missing fasteners. Replace any damaged or missing fasteners immediately.

Because of the environment in which snow equipment is expected to operate, hydraulic lines, fasteners, wearable or replaceable items and warning decals may become damaged by snow, ice and road debris. These items must be inspected daily and replaced if necessary to avoid equipment damage or personal injury.

Lubrication of moving parts is of the utmost importance. Exposure to snow, ice, salt and road debris will wash away lubrication quickly and it may be necessary to inspect and reapply lubrication more than once a day.

# **END OF SEASON SNOW PLOW MAINTENANCE**

## **GROUND ENGAGING COMPONENTS**

### **CUTTING EDGES & GUARDS**

Replace any broken, unevenly or excessively worn cutting edges and wear guards.

### **RUNNING GEAR**

Replace broken, worn, or missing running gear shoes, and any damaged adjuster leg components. Grease internal threads and sliding members (it's best to disassemble and grease directly; zerks aren't as effective at greasing these areas).

## **HARDWARE**

Replace missing or broken bolts. Proper torque is important! Use grade 8 plow bolts for steel cutting edges.

## **HYDRAULICS**

### **HOSES**

Plug or cap any QC fittings or any open hose ends. Inspect hoses for any leaks or damage. Secure hoses with hose clamps.

### **CYLINDERS**

Check cylinder for leaks, and any chrome rod dents or scratches. (If equipped with v-stack rod end seals and they are leaking, a ¼ turn of the pack nut will often stop a small leak). Apply a light coat of oil or grease on exposed rod surfaces.

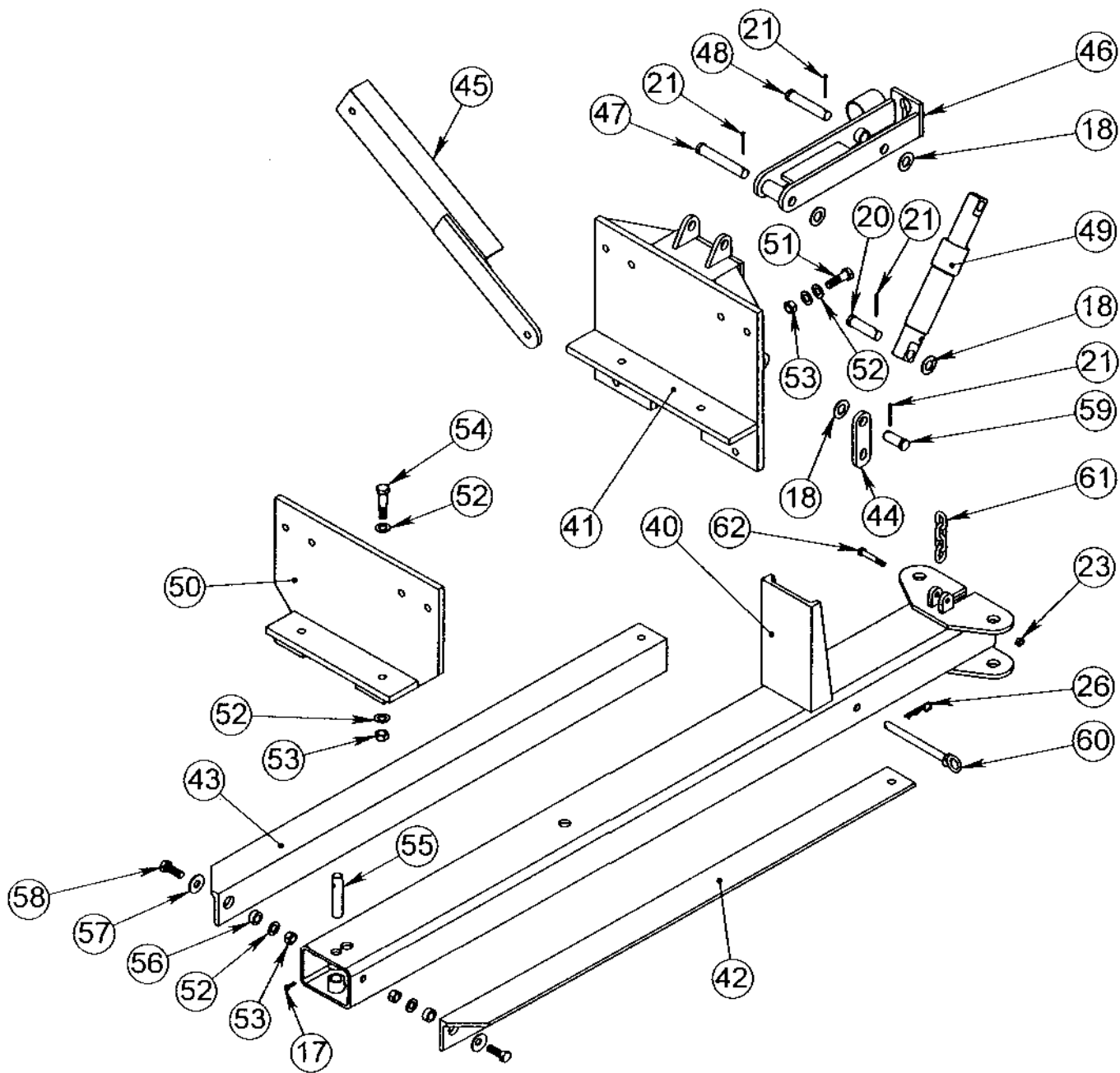
## **FRAME AND MOLDBOARD**

### **JOINTS**

Check pins, bushings, and pivot bolts for wear. Make sure all keepers are in place. Make sure shear bolts and pins are same as original equipment (usually grade 2). These items are *designed to shear* to protect the driver and the equipment.



<b>ITEM No.</b>	<b>QTY.</b>	<b>PART No.</b>	<b>DESCRIPTION</b>
1	1	2100-A0336	Inner Tube Assembly
2	1	2100-A0307	Moldboard Attaching Assembly
3	1	2100-A0312	Moldboard Knuckle Assembly
4	1	2100-A0313	Tube Knuckle Assembly
5	1	7080299	Hydraulic Cylinder – 3 x 27 x 1.5
6	1	2100-A0338	Moldboard Connecting Link Assembly
7	1	7080264	Hydraulic Cylinder – 3 x 6 x 1.5
8	1	2100-A0316	Pin Assembly
9	1	7050095	Hair Pin - #20 .243 x 5.00
10	1	2100-0767	Ear Hold-Down
11	1	7020090	Hex Capscrew – 1-8 x 4 Gr. 8
12	1	1300-0372	Swivel Bolt
13	2	2100-0820	Moldboard Attach Washer
14	1	7030023	Nut – 1-1/4–7 Slotted Gr. 2
15	1	7050043	Cotter Pin – 3/16 x 2.5
16	1	2100-0831	Cylinder Pin
17	1	7020020	Hex Capscrew – 5/16-18 x 1 Gr. 8
18	4	7040013	Flat Washer – 1" Heat Treated
19	1	7040014	Flat Washer – 1-1/4" Heat Treated
20	2	7050082	Clevis Pin – 1 x 3.5
21	3	7050003	Cotter Pin – 3/16 x 2
22	1	7020279	Hex Capscrew – 1/2-13 x 4 Gr. 2
23	1	7030031	Nut – 1/2-13 Toplock Gr. C
24	1	7050100	Clevis Pin – 1 x 2.75
25	1	7050091	Hitch Pin – 1 x 4.75
26	1	7050081	Hair Pin - #8 .177 x 3.75
27	1	2100-A0315	Pin Assembly
28	1	Various	Cutting Edge
29	Various	7150001	Plow Bolt – 5/8-11 x 2 Gr. 8
30	Various	7030026	Nut – 5/8-11 Heavy Hex
31	1	2100-A0341	Mounting Plate Assembly
32	1	Various	Moldboard Assembly



<b>ITEM No.</b>	<b>QTY.</b>	<b>PART No.</b>	<b>DESCRIPTION</b>
17	1	7020020	Hex Capscrew – 5/16-18 x 1 Gr. 8
18	4	7040013	Flat Washer – 1" Heat Treated
20	1	7050082	Clevis Pin – 1 x 2.75
21	4	7050003	Cotter Pin – 3/16 x 2
23	1	7030031	Nut – ½-13 Toplock Gr. C
26	1	7050081	Hair Pin - #8 .177 x 3.75
40	1	2100-A0335	Outer Tube Assembly
41	1	2100-A0305	Front Attachment Assembly
42	1	2100-0817	Frame Attaching Angle – Rear
43	1	2100-0818	Frame Attaching Angle – Front
44	1	2100-0719	Safety Bar
45	1	2100-A0342	Mounting Assembly
46	1	2100-A0303	Lift Arm Assembly
47	1	7050102	Clevis Pin – 1 x 6
48	1	7050101	Clevis Pin – 1 x 5
49	1	7080265	Hydraulic Cylinder – 2 x 6 x 2
50	1	2100-A0304	Back Attachment Assembly
51	1	7020255	Hex Capscrew – ¾-10 x 2.5 Gr. 8
52	30	7040007	Flat Washer – ¾" Heat Treated-SAE
53	16	7030030	Nut – ¾-10 Toplock Gr.C
54	2	7020081	Hex Capscrew – ¾-10 x 3.25 Gr. 8
55	1	2100-0714	Cylinder Pin
56	2	2100-0782	Bushing
57	2	7040008	Flat Washer – ¾" Heat Treated-USS
58	2	7020074	Hex Capscrew – ¾-10 x 2 Gr. 8
59	1	7050083	Clevis Pin – 1 x 2.25
60	1	2100-A0327	Pin Assembly
61	1	1300-2699	Chain – 3/8 x 33.75
62	1	7020049	Hex Capscrew – ½-13 x 3 Gr.5

## **Henke Standard Warranty Policy**

Henke Manufacturing Corporation(HMC) warrants its products against defects in material and workmanship for a period of 12 months from date of delivery.

HMC, at its option will repair or replace any parts or components found to be defective in materials or workmanship.

Defects will be determined through photos provided by dealer or user, or through physical inspection of returned parts. Parts are to be returned freight prepaid when requested to HMC, labeled with a returned goods authorization number.

Authorization for warranty repair will be faxed to the reporting dealer, and will include labor hours that HMC agrees to credit the dealer, and the Return Goods Authorization Number, if applicable. Credit amounts for agreed labor hours will not exceed 70% of dealer shop selling rate. Mileage, travel time, overtime, or any incidental costs will not be included in warranty consideration. Credits will apply to current or future business with HMC.

This warranty does not include normal wear items such as cutting edges, wear guards, scarifier teeth, etc. Repairs required as a result of misapplication, accidental damage, improper maintenance, improper installation, or negligence are also not covered by warranty.

HMC warranty for any purchased components, such as hydraulic cylinders will be superceded by, and equal to the component manufacturer warranty.

**SELLER IS NOT, UNDER ANY CIRCUMSTANCE, LIABLE FOR ANY INCIDENTAL, CONSEQUENTIAL OR PUNITIVE DAMAGES. SELLER EXPRESSLY DISCLAIMS AND EXCLUDES ALL IMPLIED WARRANTIES, INCLUDING ANY WARRANTY OR MERCHANTABILITY OR FITNESS FOR A PARTICULAR PURPOSE.**

# DEALER WARRANTY PROCEDURE

For units delivered within the past 12 months, report any warranty problems needing repair to our Product support department. Have information ready regarding:

1. Henke unit model and serial number,
2. Model of equipment Henke unit is attached to (prime mover)
3. Description of the problem and any helpful information by the end user. (Photos are always helpful).

Measurements or photos may be requested by Henke engineering for any issues regarding prime mover proximity and clearance, or any other unique considerations of fit and adaptability. These may be necessary for a proper repair recommendation and procedure.

Henke will respond with a written labor hour allowance for Henke participation on a faxed claim form and will ship any required replacement parts. If necessary, a repair procedure will be included on the claim form. A parts invoice will be generated to confirm shipment of the replacement parts.

If defective parts are needed for analysis, Henke will request their return. Any such returned items are to be labeled with the claim number and returned to:

Henke Manufacturing Corp  
ATTN:Product support  
3070 Wilson Av  
Leavenworth, Ks. 66048  
RGA#\_\_\_\_\_

The dealer should perform repairs as agreed on a dealer warranty repair order. Return the claim form with a copy of the dealer warranty repair order and service report. Credit as agreed will be issued to the dealer upon receipt of the dealer warranty repair order invoice (Pro-forma invoice), and upon receipt, inspection and warranty confirmation of the returned parts if any.

## Parts & Service Assistance\_\_\_\_\_

Parts and service assistance is available between the hours of 8:00 AM and 5:00 PM, Central time, Monday through Friday. Call 913-682-9000.

Our web site, [www.henkemfg.com](http://www.henkemfg.com), is a quick source for parts pricing and many common parts diagrams

Parts purchase orders may be faxed in at any time to 913-682-0300. Faxed orders are encouraged, as they help insure order accuracy and follow up. Include any special instructions, such as drop ship addresses on your order.