



Henke Manufacturing Corporation

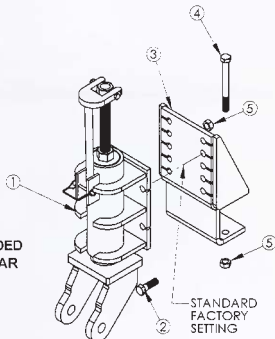
Distributed By:

Made in the USA  
For Over 90 Years

# "iPlow" Reversible Truck Mounted Snowplows

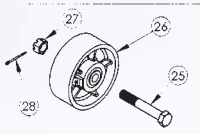


Variety of  
Optional  
Running  
Gear

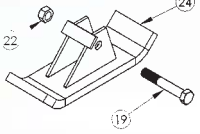


SPRING LOADED  
RUNNING GEAR

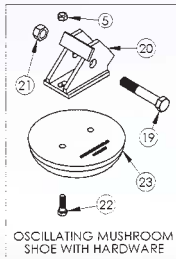
STANDARD  
FACTORY  
SETTING



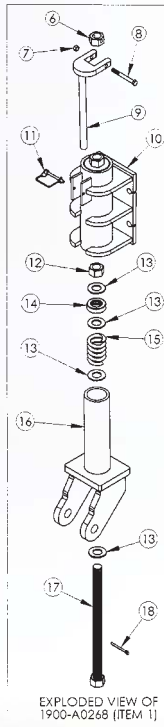
STEEL WHEEL WITH HARDWARE



RUNNER WITH HARDWARE

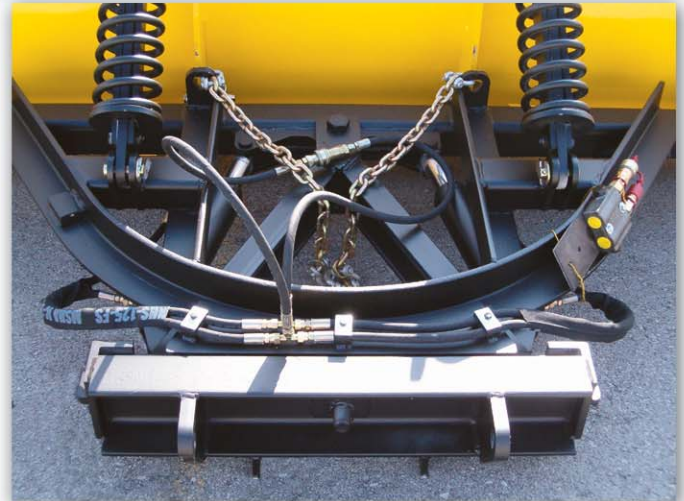


OSCILLATING MUSHROOM  
SHOE WITH HARDWARE



EXPLODED VIEW OF  
1900-A0268 (ITEM 1)

36R10IS  
"i Plow"  
Dual External  
Compression  
Spring Trip



- Available in a Wide Range of Sizes and Configurations
- Multiple Trip, Hitch, and Running Gear Options Available
- "Integral Snow Shield" Prevents Snow from Blowing Over Top of Plow Moldboard
- Double Acting Dual Reversing Hydraulic Cylinders
- Serviceable Chevron Style V-Gland Packed Cylinders
- Cutting Edge Conforms to AASTHO Punch Pattern

### Product Features:

- Available Lengths: 10', 11', 12'
- Moldboard Heights: 36", 41", 48"
- 3/16" Rolled Plate Steel
- 3 1/2" x 3 1/2" x 1/2" Steel Circle Frame w/Positive Stops

# Built Tough – Built to Last!

3070 Wilson • Leavenworth, KS 66048 • (913) 682-9000 • Fax (913) 682-0300  
www.henkemfg.com • Toll Free 888-682-9010