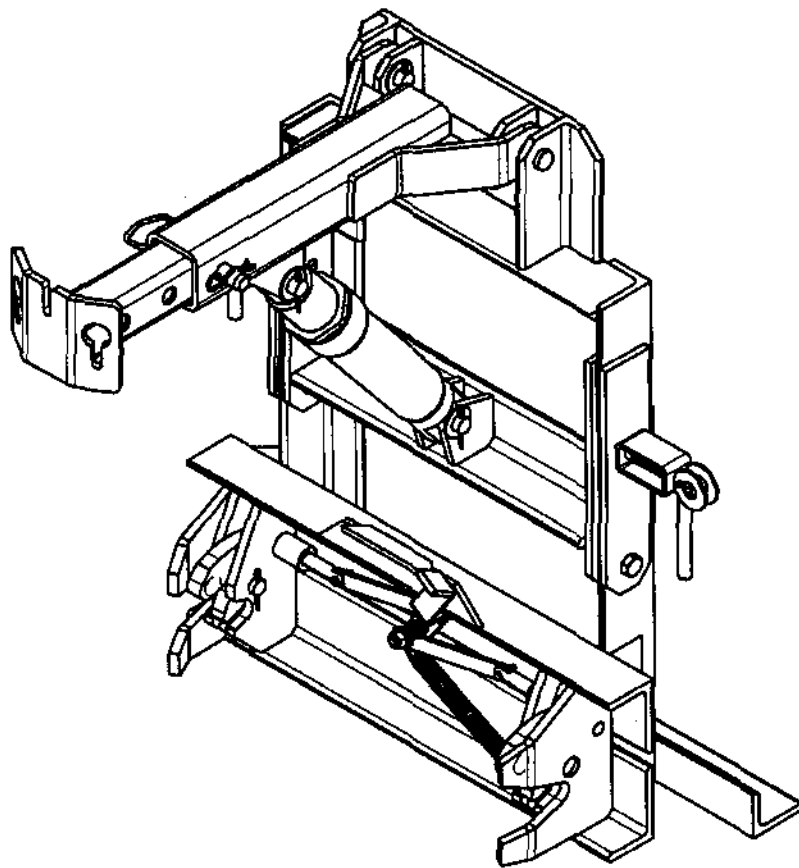


# LOW PROFILE TRUCK

# HITCH

## QUICK LINK WITH TILT FEATURE

FOR MEDIUM AND HEAVY DUTY TRUCKS



**HENKE**

**HENKE MANUFACTURING CORPORATION**

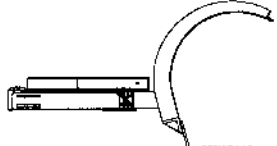
MANUFACTURERS OF SNOW REMOVAL EQUIPMENT FOR 80 YEARS  
3070 WILSON AVE. LEAVENWORTH, KS 66048 PHONE(913)682-9000 FAX(913)682-0300  
WEBSITE ADDRESS : [WWW.HENKEMFG.COM](http://WWW.HENKEMFG.COM) EMAIL: [PARTS@HENKEMFG.COM](mailto:PARTS@HENKEMFG.COM)

# SAFETY

**ONE OR MORE OF THESE SAFETY STICKERS MAY APPEAR ON YOUR HENKE PLOW. THEY ARE PLACED THERE TO INFORM YOU OF SAFETY ISSUES CONCERNING YOUR TYPE OF PLOW. ALWAYS READ AND FOLLOW SAFETY WARNINGS. THEY ARE IMPORTANT FOR YOUR SAFETY AND THE PROPER OPERATION OF YOUR HENKE PLOW.**

**CAUTION !!!**  
**DO NOT DISASSEMBLE**  
TRIP SPRINGS ARE PRESTRESSED  
AND COULD CAUSE INJURY  
HENKE MANUFACTURING CORP.  
LEAVENWORTH, KANSAS

KEEP PUSHFRAME  
PARALLEL TO GROUND  
WHILE PLOWING



HENKE MANUFACTURING CORP. LEAVENWORTH, KS

**CAUTION !! CAUTION!!**  
**SIDEMOUNT WING PLOW WARNINGS**  
1. ALWAYS USE SAFETY CHAIN WHEN TRANSPORTING WING.  
2. SLIDE ASSEMBLY OR WING MAY EXTEND ABOVE CAB HEIGHT.  
3. OVER-EXTENDING WING LIFT CYLINDER TO APPLY  
OUTBOARD DOWN PRESSURE MAY RESULT IN DAMAGE  
TO CYLINDER OR HARDWARE.  
4. ARTICULATING GRADER WHEN WING IS IN TRANSPORT  
POSITION MAY DAMAGE HARDWARE.  
HENKE MANUFACTURING CORP. LEAVENWORTH, KANSAS

THIS CYLINDER HAS ADJUSTABLE AND  
REPLACEABLE VEE GLAND PACKING. ROD  
SEAL LEAKS CAN OCCUR, OFTEN AFTER  
PERIODS OF NON-USE. FIELD ADJUSTMENT  
REQUIRED.  
USE WRENCH TO TIGHTEN GLAND NUT ONE-  
QUARTER TURN, THEN REPRESSURIZE  
CYLINDER. IF LEAKING PERSISTS, CONTINUE TO  
TIGHTEN, USING ONE-QUARTER TURN  
ADJUSTMENTS ONLY.  
**DO NOT OVERTIGHTEN**, AS VEE GLAND PACKING  
MAY BE PERMANENTLY DAMAGED.  
REPLACEMENT KITS ARE AVAILABLE.

**⚠ DANGER**  
**Blade Hazard.**  
Keep hands clear  
while operating.  
Lock out power  
before servicing.



8348-0181 8348-0181 8348-0181

**CAUTION !!!**  
**RAISE PLOW  
BEFORE  
BACKING UP**  
7330007

**⚠ CAUTION**  
**Pinch Point.**  
Keep hands and  
fingers clear.



8348-0181 8348-0181 8348-0181

- 1. PERSONS WHO INSTALL, MOUNT, OPERATE OR SERVICE THIS EQUIPMENT MUST BE PROPERLY INSTRUCTED AND WARNED. DO NOT LET ANYONE OPERATE EQUIPMENT WITHOUT PROPER INSTRUCTION.**
- 2. READ DECAL INSTRUCTIONS, CAUTIONS, AND WARNINGS. READ THE SAFETY MESSAGES IN THIS MANUAL AND REPLACE MISSING OR DAMAGED SAFETY DECALS.**
- 3. UNAUTHORIZED MODIFICATIONS TO THE SNOWPLOW AND RELATED COMPONENTS MAY IMPAIR THE FUNCTION AND/OR SAFETY.**

## **IN SEASON MAINTENANCE**

Snow removal equipment must be cared for and maintained regularly. Daily or pre-route inspection and maintenance are necessary. Failure to do so may affect efficiency and safety.

A visual inspection must be carried out after every 8 hours of operation. Look for damaged components, bends, cracked welds or hydraulic leaks. **REPAIR IMMEDIATELY!** It is recommended to re-torque all bolts after the first 8 hours of use and to regularly check for loosened or missing fasteners. Replace any damaged or missing fasteners immediately.

Because of the environment in which snow equipment is expected to operate, hydraulic lines, fasteners, wearable or replaceable items and warning decals may become damaged by snow, ice and road debris. These items must be inspected daily and replaced if necessary to avoid equipment damage or personal injury.

Lubrication of moving parts is of the utmost importance. Exposure to snow, ice, salt and road debris will wash away lubrication quickly and it may be necessary to inspect and reapply lubrication more than once a day.

# REVERSIBLE PLOW SET UP AND OPERATION

## **ALWAYS OPERATE PLOW WITH PUSHFRAME PARALLEL TO THE GROUND.**

This will help provide proper moldboard layback angle and proper plowing position, which will allow proper operation of the plow trip mechanism, and optimal overall plow performance.

Operation in a significant out-of-level position can damage the plow swivel stops, trip mechanism, and structural members.

**For new truck hitch installations**, follow the mounting instructions to achieve the proper mount height, and resulting plow attaching height. (plow pin attaching height is approx. 14" for most plows, with the plow cutting edge resting on the ground.)

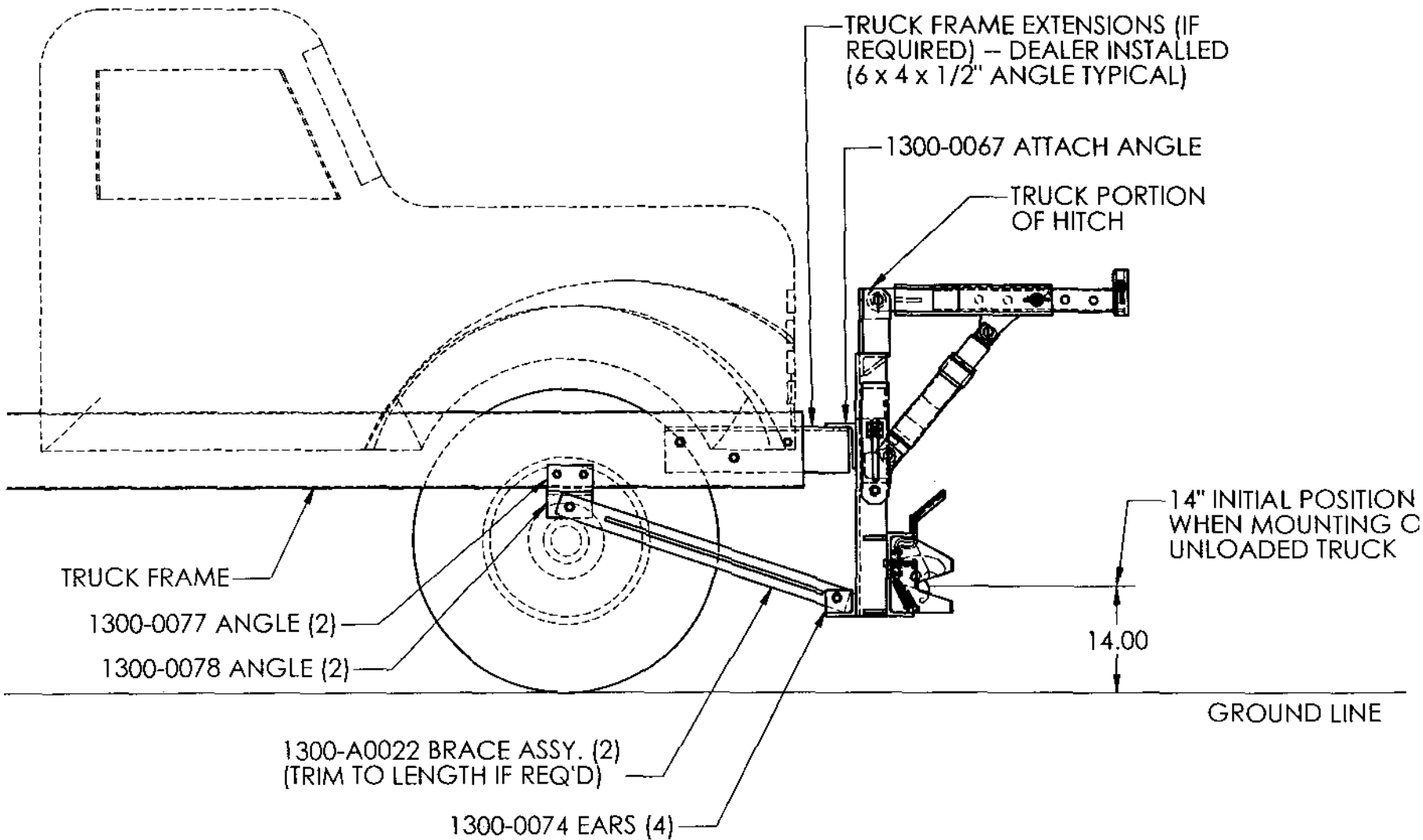
**For pinning or coupling plows to existing hitches**, select the proper mounting hole height for parallel operation, and install the hitch pin to secure the plow to the hitch. For some plows, the swivel plate can be flipped if additional up or down attaching distance is needed. If the above adjusting options do not provide reasonably parallel operation for your plow, mounting ears may need to be removed, repositioned, and reattached.

**Attach plow lifting chain to the truck hitch lift arm**, by first moving the lift arm parallel to the ground. Attach chain from plow frame to the lift arm by inserting the ½" chain link in the top center slot of the arm end plate. Raise plow and check for proper 12" ground clearance at the cutting edge. Adjust chain if necessary to accomplish 12" clearance. (For Husting hitch designs, no lift chain is used, and ground clearance of 8-10" is acceptable)

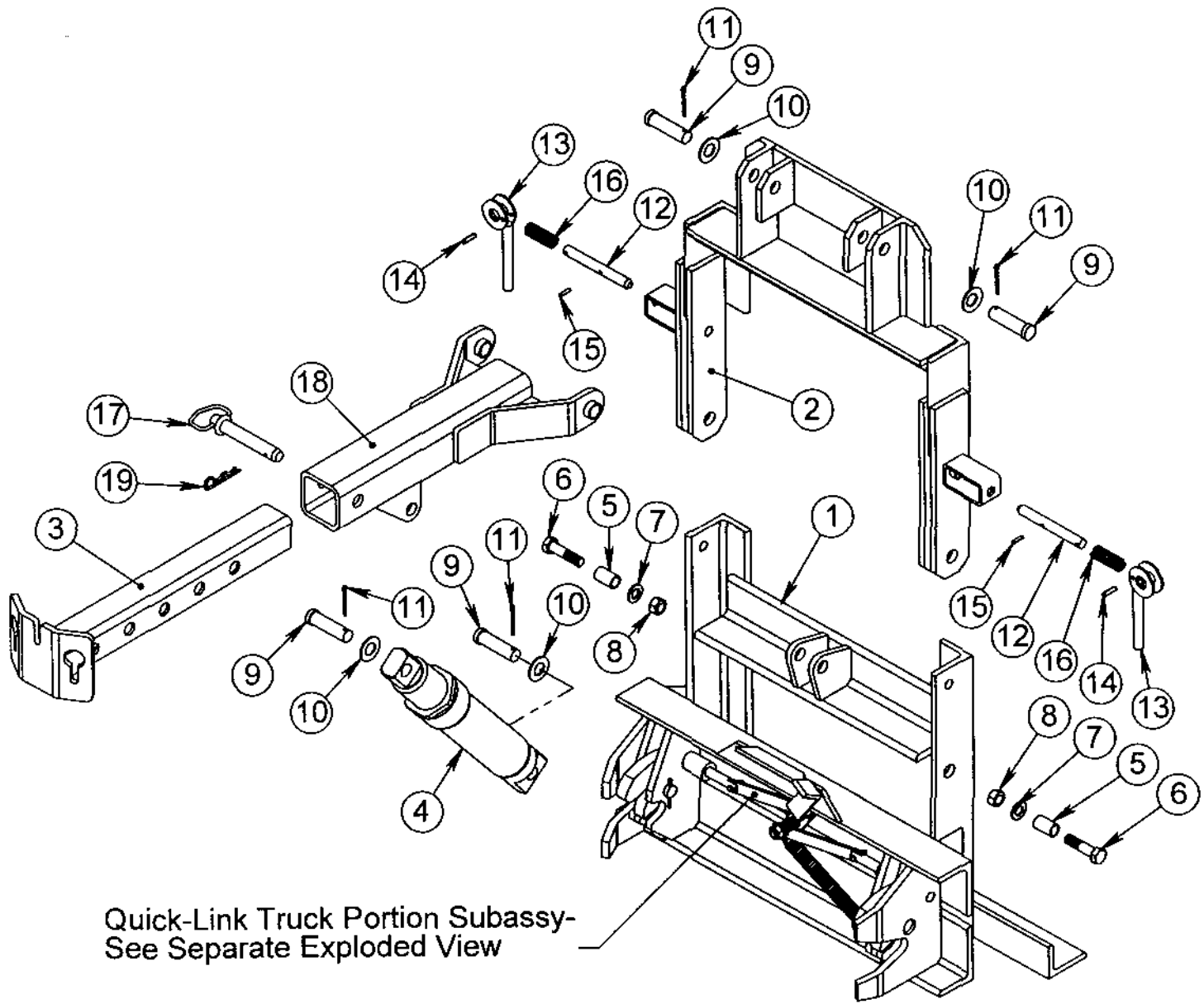
**Runner shoe adjustment(if equipped)**. Raise plow, retract running gear. Lower plow so the cutting edge is touching the ground. Lower running gear until full contact with the ground is made. Plow performs best when the weight of the plow is evenly distributed between the cutting edge and the runner shoes.

**Follow your organization's procedure for walk around safety and vehicle checks before operating**. Include the snow plow in this procedure to check for loose, missing, or excessively worn components. Check for cracks or breaks in the components and structure. Check for proper markers, reflectors and safety decals, if any. Replace any items as needed before operating.

**Drive prudently for the road conditions**. In good plowing conditions, reversible plows can generally be operated safely and with good results up to 30 mph; expressway and one way plows up to 40 mph.



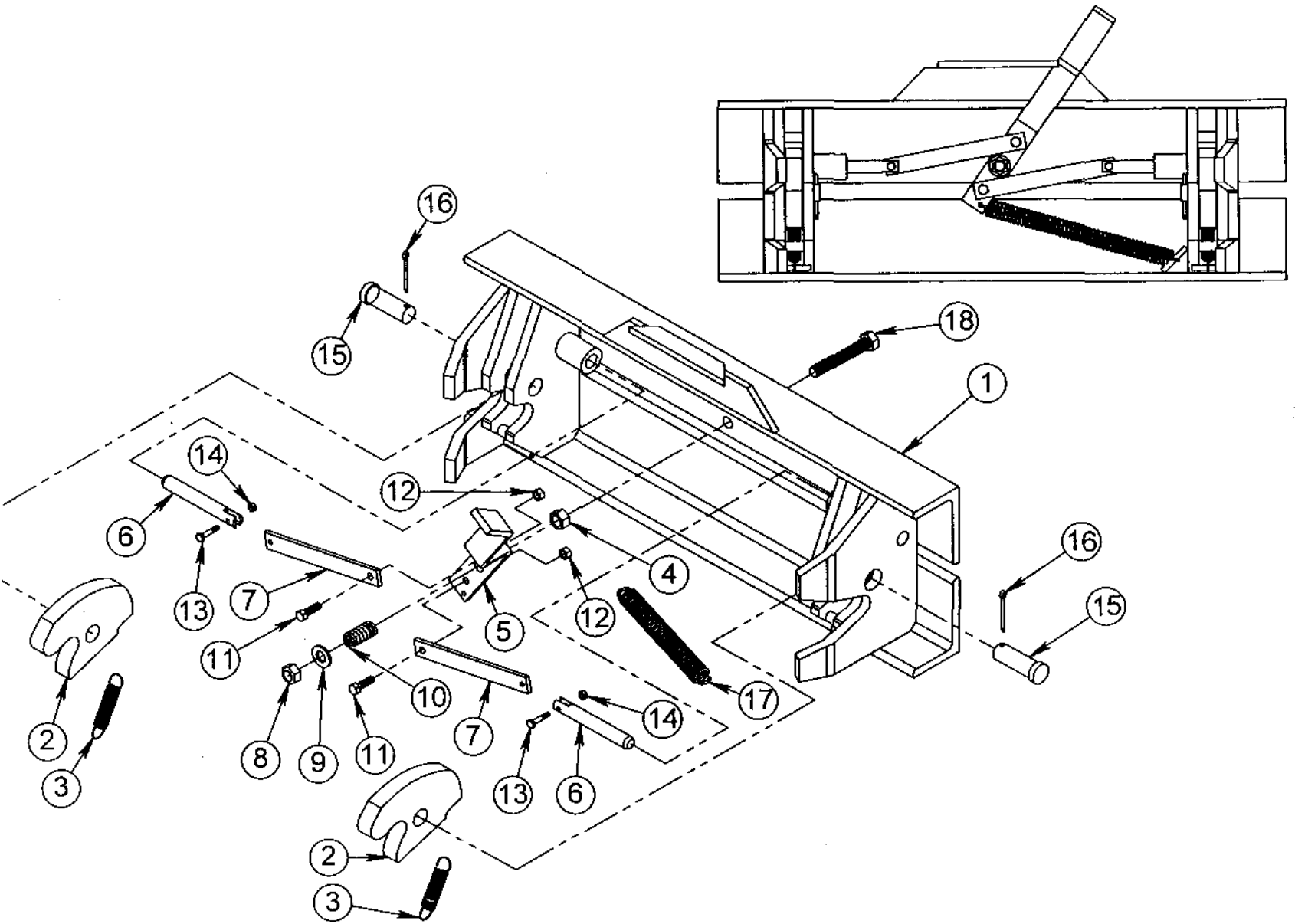
**HITCH MOUNTING ON TYPICAL TRUCK**



Quick-Link Truck Portion Subassy-  
See Separate Exploded View

<b>ITEM No.</b>	<b>QTY.</b>	<b>PART No.</b>	<b>DESCRIPTION</b>
1	1	1300-A1406	Quick-Link Tilt Lower Weldment <u>NOTE:</u> Does not include Q-L hardware or any moving parts.
2	1	1300-A0672	Tilt Upper Assy
3	1	1300-A1265	Inner Tube Assy
4	1	7080016	Hydraulic Cylinder, 4 x 10 x 2 D/A
	1	7080104	Hydraulic Cylinder, 3 x 10 S/A
	1	7080206	Hydraulic Cylinder, 3 x 10 x 2 D/A
	1	7080500	Hydraulic Cylinder, 4 x 10 S/A
5	2	1300-0352	Pivot Bushing
6	2	7020080	Hex Capscrew, 3/4-10 x 3 Gr. 8
7	2	7040007	Flat Washer, 3/4 Heat Treated SAE
8	2	7030030	Nut, 3/4-10 Top Lock Gr. C
9	4	7050082	Clevis Pin, 1 x 3.5
10	4	7040013	Flat Washer, 1" Heat Treated SAE
11	4	7050003	Cotter Pin, 3/16 x 2
12	2	1300-0386	Lock Pin
13	2	1300-A0136	Pin Handle Assy
14	2	7050027	Roll Pin, 5/16 x 1.25
15	2	7020026	Roll Pin, 1/4 x 1
16	2	7070014	Compression Spring
17	1	7050091	Hitch Pin, 1 x 4.75 Grip <u>NOTE:</u> Includes Item 19 (7050081) Hair Pin
18	1	1300-A1265	Outer Tube Assy
19	1	7050081	Hair Pin, No. 8 .177 x 3.75

**COMPLETED HITCH ASSY**  
**FOR HITCH TO OPERATE PROPERLY,**  
**LINKAGE MUST BE ASSEMBLED AS SHOWN.**



<b>ITEM No.</b>	<b>QTY.</b>	<b>PART No.</b>	<b>DESCRIPTION</b>
1	1	2900-A0024	Quick-Link Truck Portion Sub-Assy
2	2	2900-A0047	Latch Assy
3	2	7070069	Extension Spring - Small
4	1	7030010	Nut, 5/8-11 Gr. 8
5	1	2900-0147	Handle
6	2	2900-0144	Pin
7	2	2900-0145	Pin Linkage
8	1	7030084	Nut, 5/8-11 Top Lock Gr. C
9	1	7040006	Flat Washer, 5/8 Heat Treated SAE
10	1	7070070	Compression Spring
11	2	7020030	Hex Capscrew, 3/8-16 x 1.25 Gr. 2
12	2	7030006	Nut, 3/8-16 Nylock Gr. 2
13	2	7020309	Hex Capscrew, 1/4-20 x 1.25 Gr. 2
14	2	7030044	Nut, 1/4-20 Nylock Gr. 2
15	2	7050100	Clevis Pin, 1 x 2.75
16	2	7050003	Cotter Pin, 3/16 x 2
17	1	7070068	Extension Spring - Large
18	1	7020276	Hex Capscrew, 5/8-11 x 4 Gr. 5

# **Henke Standard Warranty Policy**

Henke Manufacturing Corporation(HMC) warrants its products against defects in material and workmanship for a period of 12 months from date of delivery.

HMC, at its option will repair or replace any parts or components found to be defective in materials or workmanship.

Defects will be determined through photos provided by dealer or user, or through physical inspection of returned parts. Parts are to be returned freight prepaid when requested to HMC, labeled with a returned goods authorization number.

Authorization for warranty repair will be faxed to the reporting dealer, and will include labor hours that HMC agrees to credit the dealer, and the Return Goods Authorization Number, if applicable. Credit amounts for agreed labor hours will not exceed 70% of dealer shop selling rate. Mileage, travel time, overtime, or any incidental costs will not be included in warranty consideration. Credits will apply to current or future business with HMC.

This warranty does not include normal wear items such as cutting edges, wear guards, scarifier teeth, etc. Repairs required as a result of misapplication, accidental damage, improper maintenance, improper installation, or negligence are also not covered by warranty.

HMC warranty for any purchased components, such as hydraulic cylinders will be superceded by, and equal to the component manufacturer warranty.

SELLER IS NOT, UNDER ANY CIRCUMSTANCE, LIABLE FOR ANY INCIDENTAL, CONSEQUENTIAL OR PUNITIVE DAMAGES. SELLER EXPRESSLY DISCLAIMS AND EXCLUDES ALL IMPLIED WARRANTIES, INCLUDING ANY WARRANTY OR MERCHANTABILITY OR FITNESS FOR A PARTICULAR PURPOSE.

# DEALER WARRANTY PROCEDURE

**For units delivered within the past 12 months, report any warranty problems needing repair to our Product support department. Have information ready regarding:**

1. Henke unit model and serial number,
2. Model of equipment Henke unit is attached to (prime mover)
3. Description of the problem and any helpful information by the end user. (Photos are always helpful).

Measurements or photos may be requested by Henke engineering for any issues regarding prime mover proximity and clearance, or any other unique considerations of fit and adaptability. These may be necessary for a proper repair recommendation and procedure.

Henke will respond with a written labor hour allowance for Henke participation on a faxed claim form and will ship any required replacement parts. If necessary, a repair procedure will be included on the claim form. A parts invoice will be generated to confirm shipment of the replacement parts.

If defective parts are needed for analysis, Henke will request their return. Any such returned items are to be labeled with the **claim number** and returned to:

**Henke Manufacturing Corp**  
**ATTN:Product support**  
**3070 Wilson Av**  
**Leavenworth, Ks. 66048**  
**RGA# \_\_\_\_\_**

The dealer should perform repairs as agreed on a dealer warranty repair order. Return the claim form with a copy of the dealer warranty repair order and service report. Credit as agreed will be issued to the dealer upon receipt of the dealer warranty repair order invoice (Pro-forma invoice), and upon receipt, inspection and warranty confirmation of the returned parts if any.

## **Parts & Service Assistance**

Parts and service assistance is available between the hours of **8:00 AM and 5:00 PM**, Central time, Monday through Friday. **Call 913-682-9000.**

Our web site, **[www.henkemfg.com](http://www.henkemfg.com)**, is a quick source for parts pricing and many common parts diagrams

Parts purchase orders may be faxed in at any time to **913-682-0300**. Faxed orders are encouraged, as they help insure order accuracy and follow up. Include any special instructions, such as drop ship addresses on your order.